

Technical data

Date	11/17/2016
Offer N.	---
Type	MN40-200B

Client	Gidros	Reference	---
--------	--------	-----------	-----

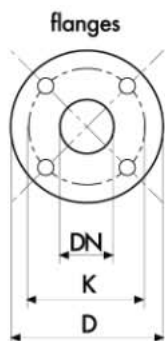
Pump data

Pump body	cast iron	Monobloc horizontal centrifugal pumps, constructed to EN 733 standards; widely used in water supplies, pressurisation and fire-fighting systems, cooling, heating, irrigation, industrial and agricultural applications; standard supply with counter-flange.
Motor bracket	cast iron	
Impeller	cast iron, bronze or stainless steel	
Mechanical seal	ceramic-graphite	
Motor shaft	stainless steel AISI 316	
Liquid temperature	-10 ÷ +90 °C	
Operating pressure	max 10 bar	

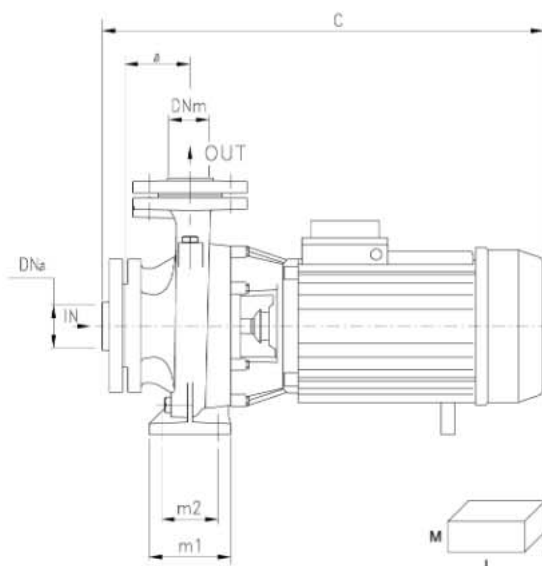
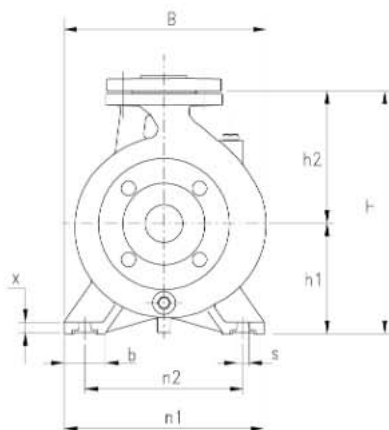
Motor data

2 pole induction motor	3~ 230/400V-50Hz; 1~ 230V-50Hz with thermal protection
Insulation class	F
Protection degree	IP55

Technical Sheet



DIMENSIONS (mm)				
DN	D	K	n°	Ø
32	140	100	4	18
40	150	110	4	18
50	165	125	4	18
65	185	145	4	18
80	200	160	8	18
100	220	180	8	18
125	250	210	8	18



DNA	DNM	DIMENSIONS (mm)															Kg	
		a	h1	h2	m1	m2	n1	n2	b	x	s	C	B	H	I	L	M	
65	40	100	160	180	100	70	265	212	50	15	14	590	273	340	615	310	460	65

Notes

The information may be subject to change without notice. It is always advisable to contact our commercial department in order to get further information about the products, their technical specifications and warranty conditions. The Company is expressly relieved of any liability for the purchasing of a product not in line with the customer's needs, if not consulted beforehand for a specific consultancy.



Working Curves

Pump type: MN40-200B

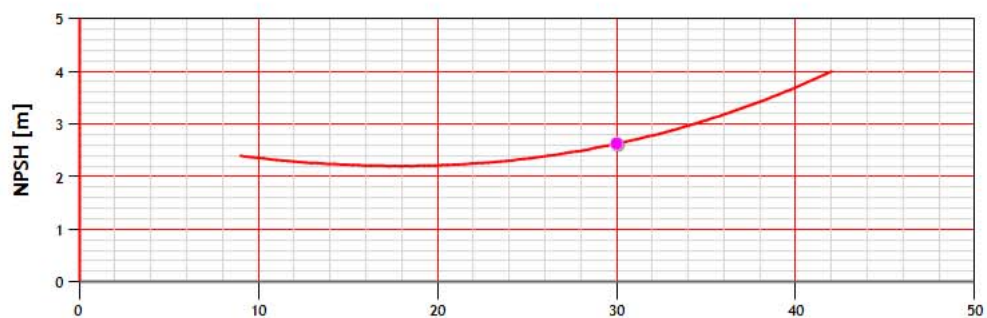
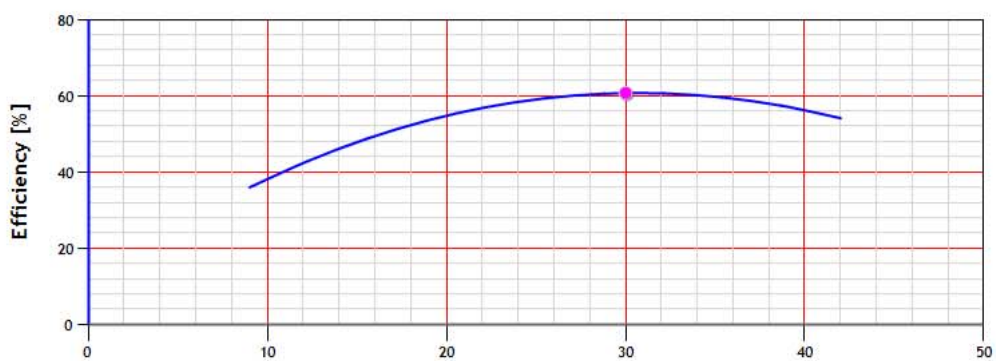
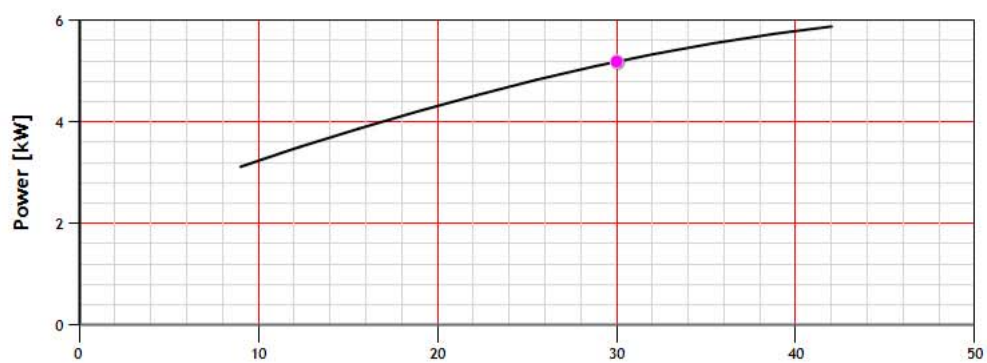
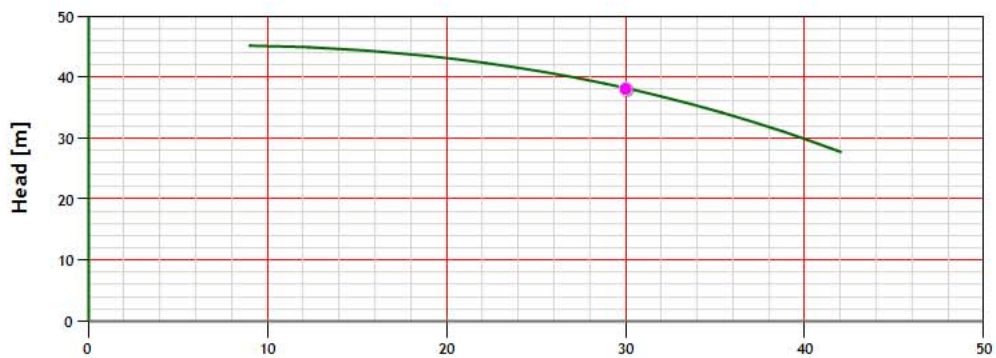
Curv n°:

MN40-200B

Date:

11/17/2016

Q (m³/h) 30 - H (m) 38.1 - Power [kW] 5.19 - Efficiency % 60.72 - NPSH (m) 2.63



Flow Rate [m³/h]